



**MODULAR
LIGHTING
INSTRUMENTS**
— by MLI NA Corporation

SEMIH





SEMIH

Design — Jeffrey Huyghe

versions	2 sizes: 2.4" and 3.4"
required parts	2.4: magnetic reflector, lens, frosted lens, microprismatic lens
colors	black structure, white structure
mounting	plaster plate for 4"x4" jbox
accessories	cover plates, back plates 2.4 with lens: snoot 2.4 with frosted & microprismatic lens: snoot, crossblade, honeycomb
output	3.4: up to 1587lm 2.4: 811lm - warm dim: 928lm
luminaire power	3.4: 19W 2.4: 12W (excluding driver)
cct	2700K, 3000K, 3500K 2.4 - warm dim: 1800K - 3000K
cri	>90 3.4: R9=65 (3500K) 2.4: R9=89 (3500K) 2.4 - warm dim: R9=87 (3000K)
optics	15°, 25°, 40° 2.4 - warm dim: 25° - 40°
voltage	120-277V
dimming	3.4: ELV/Triac/0-10V 1% 2.4: remote driver - EldoLED 0-10V, ELV/Triac/0-10V
adjustability	3.4: h 360° v -75°/+75° 2.4: h 360° v -70°/+70°
location	damp rated
more info?	supermodular.com/en-us/semih/

Just like in the yin-yang symbol, an S-shaped line divides Semih into two equal, yet opposite, sections: the hard, solid part mounted to the ceiling and the soft, round LED housing, which can be easily pointed in the direction of specific objects or places. Adding a sense of softness and style to any interior, Semih is exceptionally easy to install, thanks to strong mounting springs.

Flexibility par excellence

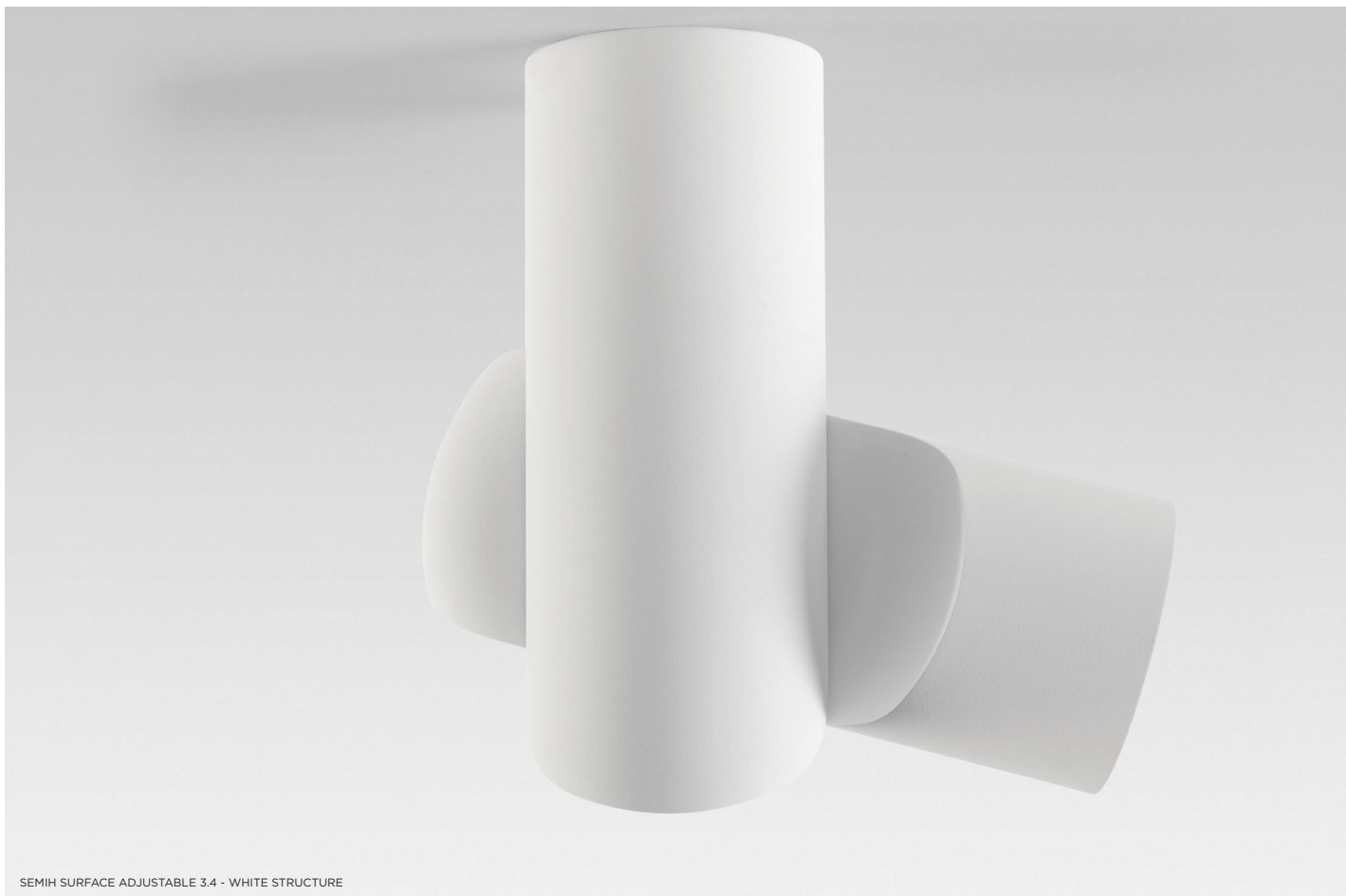
Today's interiors are places where people work, relax and enjoy. To cater to all these different functions, interior architects prefer to keep spaces multifunctional and flexible. Semih was designed especially with this philosophy in mind: the rotating LED housing with a choice of reflectors or lenses and optical accessories can cast accent, task-related or ambient lighting wherever it is needed.

Two sizes, many spaces

Semih comes in two sizes, ø3.4 and ø2.4. The original Semih, whose size and performing light were originally designed for multifunctionality in retail and hospitality, offers various types of light accents. Semih 2.4's application opens itself further to residential settings and small boutiques, where more subtle lighting is suitable. When installed with a junction box, an optional back plate can cover visible screws and take away the need for meticulous plastering.

Versatile light source

Semih is made of two identical parts, divided by a mere 0.08" S-shaped gap. With the part mounted to the ceiling rotating by 360° around its axis and the LED housing by 75° (in both directions), Semih is a very versatile lighting fixture, which can be used in any situation. Semih features a powerful, dimmable and energy-efficient LED source.



SEMIH SURFACE ADJUSTABLE 3.4 - WHITE STRUCTURE



SEMIH SURFACE ADJUSTABLE 3.4 - BLACK STRUCTURE, ALUMINIUM REFLECTOR



SEMIH SURFACE ADJUSTABLE 2.4 - BLACK STRUCTURE, GOLD REFLECTOR

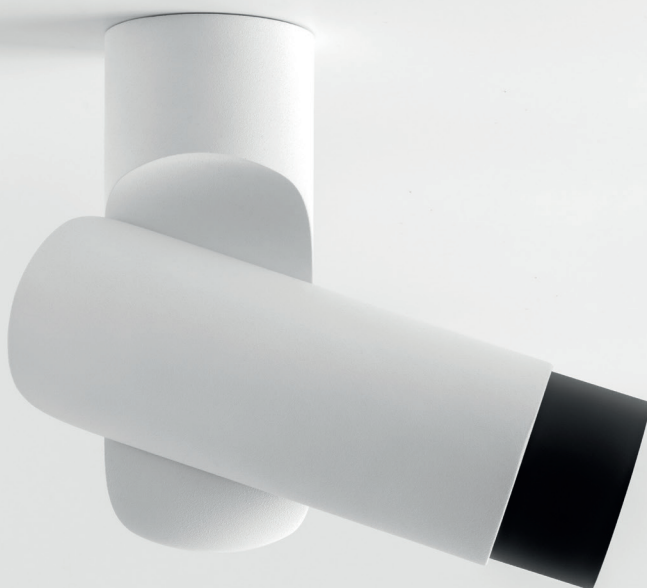


SEMIH SURFACE ADJUSTABLE 2.4 (LENS) - WHITE STRUCTURE





SEMIH SURFACE ADJUSTABLE 2.4 (SNOOT) - BLACK STRUCTURE



SEMIH SURFACE ADJUSTABLE 2.4 (SNOOT) - WHITE STRUCTURE



SEMIH SURFACE ADJUSTABLE 2.4 (FROSTED LENS) - BLACK STRUCTURE



SEMIH SURFACE ADJUSTABLE 2.4 (MICROPRISMATIC LENS) - WHITE STRUCTURE



SEMIH SURFACE ADJUSTABLE 2.4 (HONEYCOMB) - WHITE STRUCTURE



SEMIH SURFACE ADJUSTABLE 2.4 (CROSSBLADE) - BLACK STRUCTURE





SEMIH SURFACE, MINUDE TRACK 48V,
PISTA LINEAR LIGHT TRACK 48V, PISTA TRACK 48V SUSPENDED







Tel: +1 800 674 9691
welcome.us@supermodular.com – www.supermodular.com